

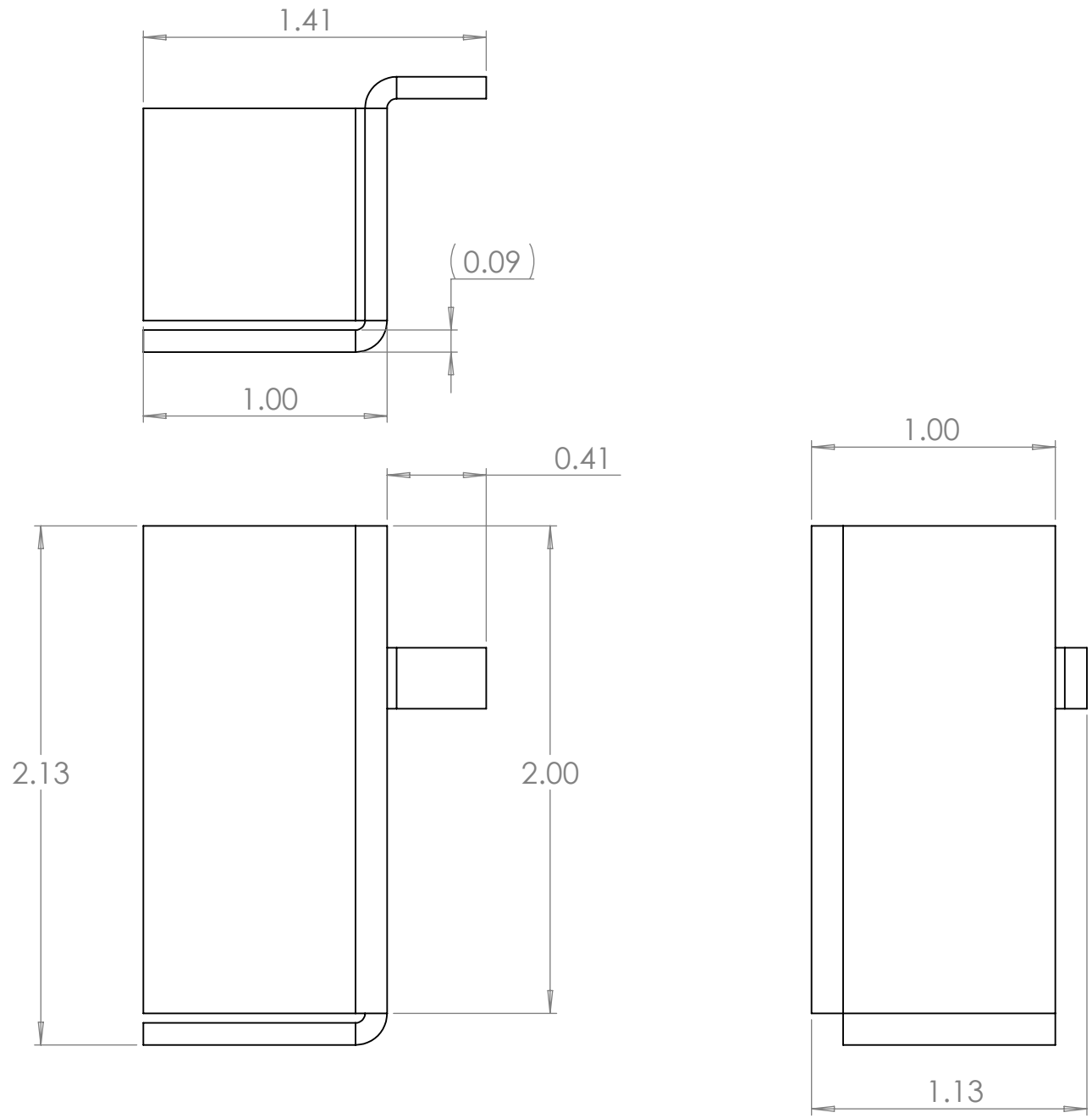
4

3

2

1

B



B

A

NOTES: UNLESS OTHERWISE SPECIFIED.

1. PARAMETRIC MODEL. ALL DIMENSIONS FURTHER SPECIFIED IN 003-00022.
2. FLAT PATTERN FOR PART SPECIFIED ON LAST SHEET OF DRAWING.
3. PART SHALL BE FREE OF ANY SHARP EDGES AND BURRS.
4. PART TO BE CLEANED OF ALL OIL AND DEBRIS.
5. MATERIAL: A1008 STEEL
6. FINISH: NONE
7. GAUGE: 13
8. PART SHALL NOT BE MODIFIED BY ANY PARTY OUTSIDE PAPERLESS PARTS, INC UNLESS WRITTEN OR EXPRESS APPROVAL HAS BEEN PERMITTED FOR THE PART.

A

**PROPRIETARY AND CONFIDENTIAL**

THE INFORMATION CONTAINED IN THIS DRAWING IS THE SOLE PROPERTY OF PAPERLESS PARTS, INC. ANY REPRODUCTION IN PART OR AS A WHOLE WITHOUT THE WRITTEN PERMISSION OF PAPERLESS PARTS, INC IS PROHIBITED.

UNLESS OTHERWISE SPECIFIED:		NAME	DATE
DIMENSIONS ARE IN INCHES		DRAWN	NM 8/30/2024
TOLERANCES:		CHECKED	
ANGULAR: MACH ± 1.0°		ENG APPR.	
BEND ± 0.5°		MFG APPR.	
ONE PLACE DECIMAL ± 0.1		Q.A.	
TWO PLACE DECIMAL ± 0.05		COMMENTS:	
MATERIAL			
A1008 STEEL			
FINISH			
NONE			
DO NOT SCALE DRAWING			

**paperlessPARTS**

TITLE:

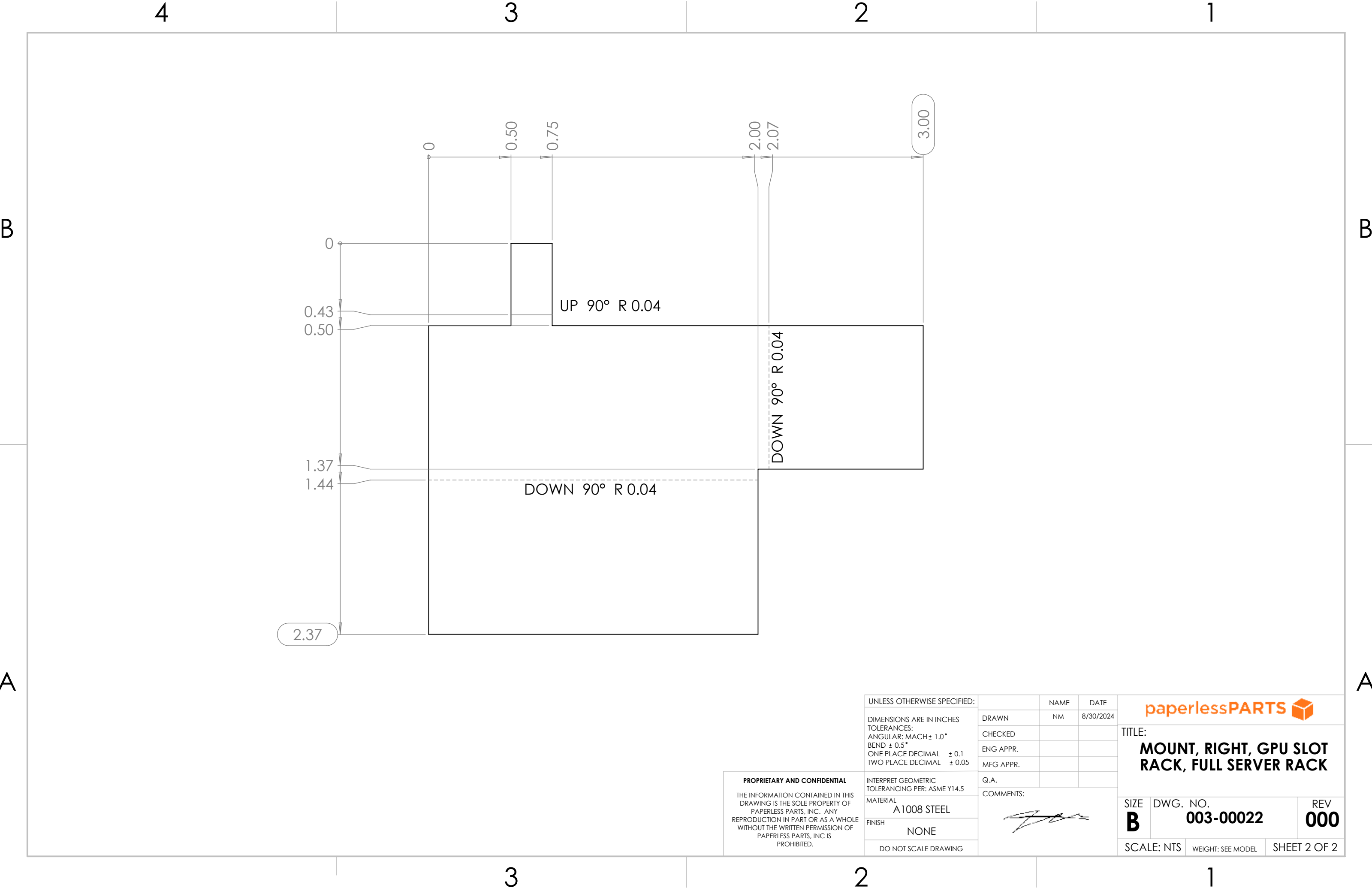
**MOUNT, RIGHT, GPU SLOT RACK, FULL SERVER RACK**

SIZE	DWG. NO.	REV
<b>B</b>	<b>003-00022</b>	<b>000</b>
SCALE: NTS		WEIGHT: SEE MODEL
SHEET 1 OF 2		

3

2

1




**PROPRIETARY AND CONFIDENTIAL**

THE INFORMATION CONTAINED IN THIS DRAWING IS THE SOLE PROPERTY OF PAPERLESS PARTS, INC. ANY REPRODUCTION IN PART OR AS A WHOLE WITHOUT THE WRITTEN PERMISSION OF PAPERLESS PARTS, INC IS PROHIBITED.

UNLESS OTHERWISE SPECIFIED:	
DIMENSIONS ARE IN INCHES	
TOLERANCES:	
ANGULAR: MACH ± 1.0°	
BEND ± 0.5°	
ONE PLACE DECIMAL ± 0.1	
TWO PLACE DECIMAL ± 0.05	
MATERIAL	A 1008 STEEL
FINISH	NONE
DO NOT SCALE DRAWING	

	NAME	DATE
DRAWN	NM	8/30/2024
CHECKED		
ENG APPR.		
MFG APPR.		
Q.A.		
COMMENTS:		

<b>paperlessPARTS</b> 		
TITLE:		
<b>MOUNT, RIGHT, GPU SLOT RACK, FULL SERVER RACK</b>		
SIZE	DWG. NO.	REV
<b>B</b>	<b>003-00022</b>	<b>000</b>
SCALE: NTS	WEIGHT: SEE MODEL	SHEET 2 OF 2